

Anti-Alpha-Synuclein Antibody

Cat No: Kab00345

Product Information:

Size:	100 ug
Form:	liquid
Purification:	Immunogen affinity purified
Purity:	≥95% as determined by SDS-PAGE
Host:	Rabbit
Clonality:	polyclonal
Clone ID:	None
IsoType:	IgG
Storage:	PBS with 0.02% sodium azide and 50% glycerol pH 7.3, -20°C for 12 months (Avoid repeated freeze / thaw cycles.)

Background

Alpha-synuclein is a member of the synuclein family, which also includes beta-and gamma-synuclein. Synucleins are abundantly expressed in the brain and alpha-and beta-synuclein inhibit phospholipase D2 selectively. SNCA may serve to integrate presynaptic signaling and membrane trafficking. Defects in SNCA have been implicated in the pathogenesis of Parkinson disease. SNCA peptides are a major component of amyloid plaques in the brains of patients with Alzheimer & apos;s disease. Alternatively spliced transcripts encoding different isoforms have been identified for this gene.

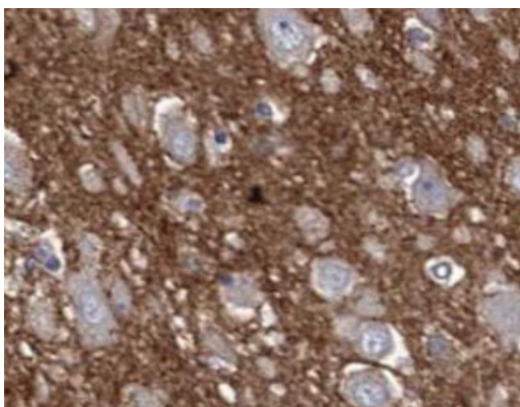
Immunogen information

Immunogen:	synuclein, alpha (non A4 component of amyloid precursor)
Synonyms:	Alpha synuclein, NACP, PARK1, PARK4, SNCA
Observed MW:	15 kDa
Uniprot ID:	P37840

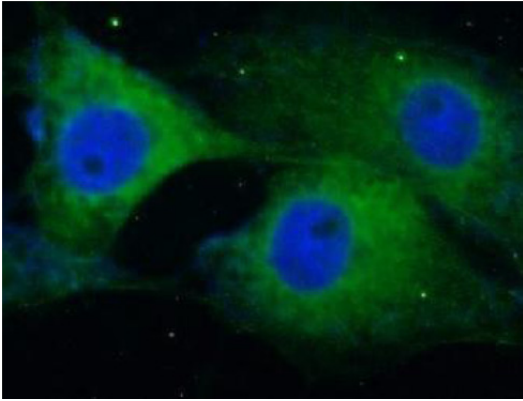
Application

Reactivity:	Human, Rat
Tested Application:	ELISA, WB, IHC, IF
Recommended dilution:	WB: 1:500-1:2000; IHC: 1:50-1:200; IF: 1:50-1:200

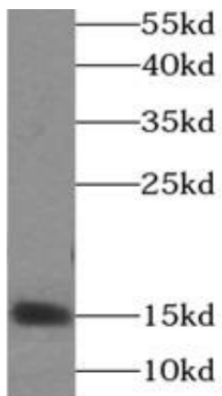
Image:



Immunohistochemistry of paraffin-embedded human brain using #Kab00345 (alpha-synuclein antibody) at dilution of 1:50



Immunofluorescent analysis of SH-SY5Y cells using #Kab00345 (alpha-synuclein antibody) at dilution of 1:25 and Alexa Fluor 488-conjugated Goat Anti-Rabbit IgG(H+L)



mouse brain tissue were subjected to SDS PAGE followed by western blot with #Kab00345 (alpha-synuclein antibody) at dilution of 1:1000 .

Note: This product is for research use only, not for diagnostic or therapeutic use.